



GAS ROTISSERIE

GRANDES FLAMMES MILLENIUM RANGE

GrandFlame GF

Ref.: 1675.8x

1375.12x	1375.8x	1375.6x
1375.5x	1375.4x	1375.2x
975.8x	975.6x	975.5x
975.4x	975.2x	

INSTALLERS MANUAL

1. PRESENTATION OF THE UNIT

1.1. GENERAL

Rotisserie range " Grandes Flammes MILLENIUM " gas powered with electrical power of 208-240V + earth.

Reference	Lenght (inch)	depth (inch)	Height (inch)	weight (lb)	Gas power (btu/h)	Electrical power (kw)
1675.8x	68	24 5/8	64 7/8	772	174000	0,69
1375.12x	56 7/8	27 5/8	63 3/8	706	154000	0,69
1375.8x	56 1/8	24 5/8	64 7/8	662	154000	0,69
1375.6x	56 1/8	26 1/8	64 7/8	650	154000	0,67
1375.5x	56 1/8	24 5/8	45 3/4	419	102500	0,55
1375.4x	56 1/8	24 5/8	45 3/4	419	102500	0,52
1375.2x	56 1/8	24 5/8	31 1/2	221	51250	0,49
975.8x	40 3/8	24 5/8	64 7/8	430	102500	0,44
975.6x	40 3/8	27 5/8	64 7/8	430	102500	0,38
975.5x	40 3/8	24 5/8	45 3/4	309	68240	0,35
975.4x	40 3/8	24 5/8	45 3/4	309	68240	0,32
975.2x	40 3/8	24 5/8	31 1/2	155	341200	0,29

The device is for professional use and should be used by qualified personnel.

Before starting any operation, please see these instructions. Carefully keep available near the rotisserie.

Upgrading facilities at the expense of the user.

Any cooking appliance generates heat and grease particles.

It is advised to plan their accommodation in premises protected anti-fire and mechanically ventilated, accordance with security regulations and health standards relating to tradesmouths (please contact specialized companies and approved for benefits at work perform according to safety standards: ventilation (extraction), plumbing (water, gas, fire protection, etc ...), electricity, building (non-slip tiles, firewall, etc ...).

We advise you to hire a qualified dealer for connecting and commissioning road from the roasting pan on condition that the electric and gas bookings are carried out by companies licensed, authorized by you, and waiting near the location of the device cooking.

For maintenance and repairs, you must contact the factory, the factory representative or local service company.

Interventions on the electrical parts must be performed by qualified personnel accordance with the standards.

The company is not liable for damages if:

- incorrect use of the device
- non-compliance with standards
- incorrect installation
- non compliance with guidance on maintenance
- unauthorized modification
- installation of non-original spare parts
- installation and use of the rotisserie different than those provided by the manufacturer

The plate is located on the back right in the middle of the upright.

1.2. TRADEMARK, MODEL, REFERENCE

Rotisseries **ROTISOL**, model « **GRANDES FLAMMES MILLENIUM** », (**GranfFlame GF**), references: **1675.8x, 1375.6x, 1375.8x, 1375.5x, 1375.2x, 975.8x, 975.5x and 975.2x.**

We advise you to hire a qualified dealer for connecting and commissioning road from the roasting pan on condition that the electric and gas bookings are carried out by companies licensed, authorized by you, and waiting near the location of the device cooking.

Interventions on the electrical parts must be performed by qualified personnel accordance with the standards.

The company is not liable for damages if:

- incorrect use of the device
- non-compliance with standards
- incorrect installation
- non compliance with guidance on maintenance
- unauthorized modification
- installation of non-original spare parts
- installation and use of the rotisserie different than those provided by the manufacturer

In case of suspicious odors of gas in place of the rotisserie, stop it by closing valves gas supplies and the power supply.

Open windows

If gas odors persist, call the local gas supplier.

<p style="text-align: center;">AVERTISSEMENT</p> <p>Mise à la terre Cet appareil est pourvu d'une fiche à trois broches dont une mise à la terre assurant une protection contre les chocs. La prise dans laquelle elle est branchée doit être correctement mise à la terre. Ne pas couper ni enlever la broche de mise à la terre de la fiche.</p>
<p style="text-align: center;">WARNING</p> <p>Electrical grounding instructions This appliance is equipped with a three-prong (grounding) plug for your protection against shock hazard and should be plugged directly into a properly grounded three-prong receptacle. Do not cut or remove the grounding prong from this plug.</p>

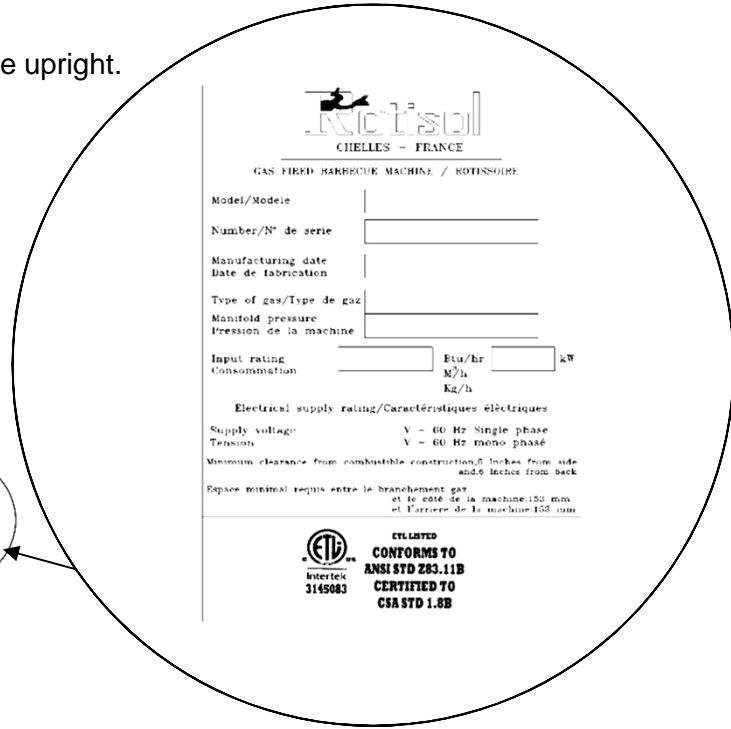
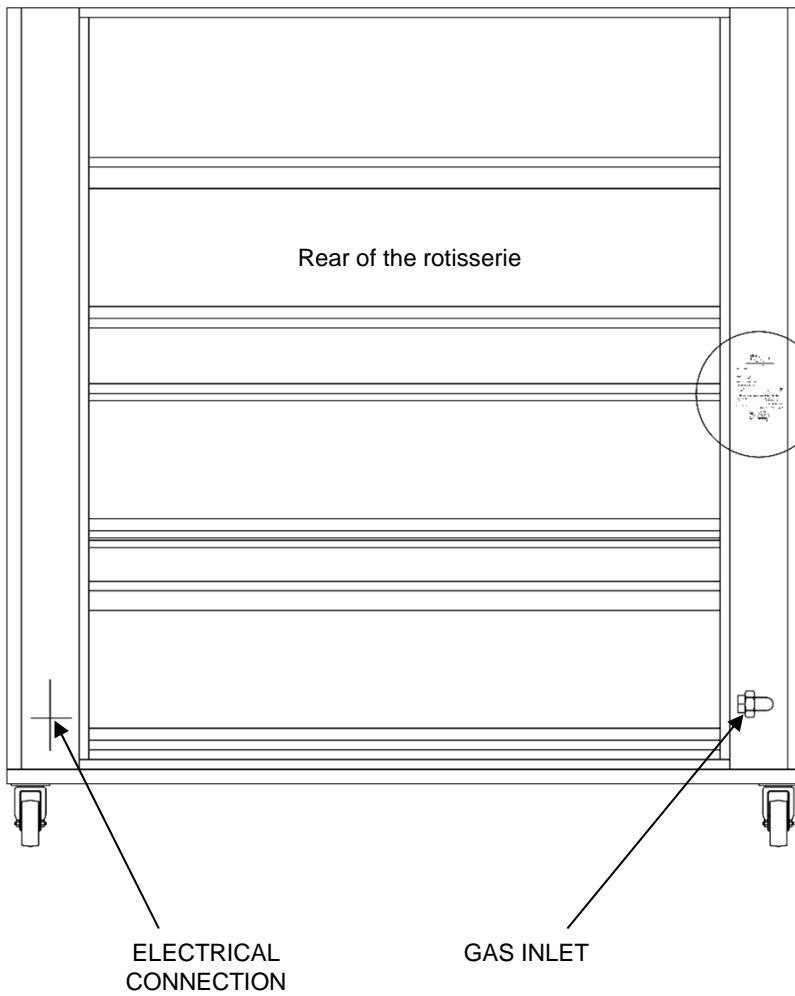
1.2. TRADEMARK, MODEL, REFERENCE

Rotisseries **ROTISOL**, model « **GRANDES FLAMMES MILLENIUM** », reference:

1675.8x, 1375.12x, 1375.8x, 1375.6x, 1375.5x, 1375.4x, 1375.2x, 975.8x, 975.6x, 975.5x, 975.4x et 975.2x.

1.3. SITE OF MANUFACTURERS PLATE

The plate is located on the back right in the middle of the upright.



1.4. COMPULSORY MARKING



INSTALLATION ET UTILISATION

- Installer en dessous d'une hotte de ventilation seulement.
- Ne pas installer cet appareil sous des surfaces combustibles non protégées
- ATTENTION. Le régulateur de pression fourni avec cet appareil doit être utilisé. Ce régulateur est réglé pour une pression de sortie de 8 pouces de colonne d'eau.
- L'alimentation en gaz doit être coupée à la bouteille d'alimentation en gaz PL lorsque cet appareil n'est pas utilisé.
- Installer dans des locaux faits de matériaux incombustible seulement

INSTAL AND USE

- For installation under ventilation hood only.
- Do not locate this appliance under overhead, unprotected combustible surfaces.
- CAUTION. The gas pressure regulator provided with this appliance must be used. This regulator is set an outlet pressure of 8 inches water column.
- The gas supply must be turned off at the LP-gas supply cylinder when this appliance is not in use.
- For use on noncombustible floors locations only

2. SETTING UP UNIT AND STARTING UP

- Before connecting and starting up the rotisserie. Ensure that the gas and electrical connections are present. This work are at the client cost, that he needs to have done by are a agreed company, near the position that the rotisserie is to be enforceable by companies.
- The new air flow require for the combustion is : 20,7 ft³/h per 1000 btu/h of the calorifique flow. the flow of combustion and ventilation air must be free and unhindered
- The gas supply must be turned off at the supply bottle LP gas (propane) when the unit is not used.

2.1. SETTING UP

2.1.1. UNPACKING

Unpack the rotisserie that is circled, filmed and fixed on palette.

2.1.2. INSTALLING THE UNIT NEXT TO WALLS AND APPLIANCES

A distance of 3/4 "should be maintained between the sides panels and adjacent walls. The openings must not be obstructed. The unit with glace door open should be placed at a distance minimum of 3/4 " to adjacent walls.

2.1.3. APPLIANCE EQUIPPED WITH WHEELS

The device must be placed on a perfectly level ground and locked in a stationary position for use and et le stockage.

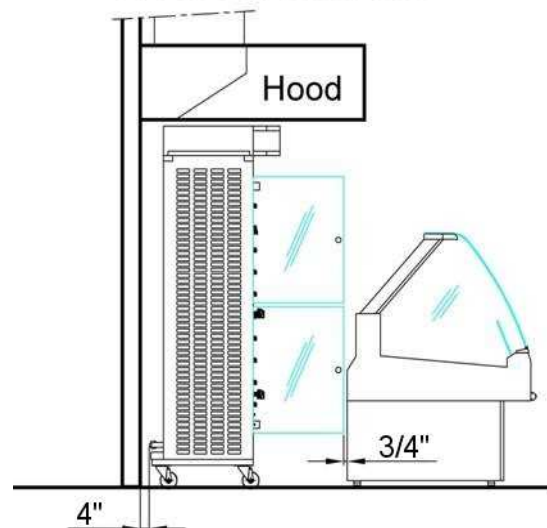
2.1.4. ENVIRONNEMENT

The device should not be installed near the steam,grease (frying,...), projections of water, high températures or other adverse condition.

Do not install this unit under unprotected combustible surfaces.

Keep the area of the machine free, and free of combustible materials.

INDOOR INSTALLATION OR OPEN KITCHEN



2.2. GAS CONNECTION

Connect the rôtisserie to the gas supply, with interposing a block valve to isolate this one from the rest of the installation.

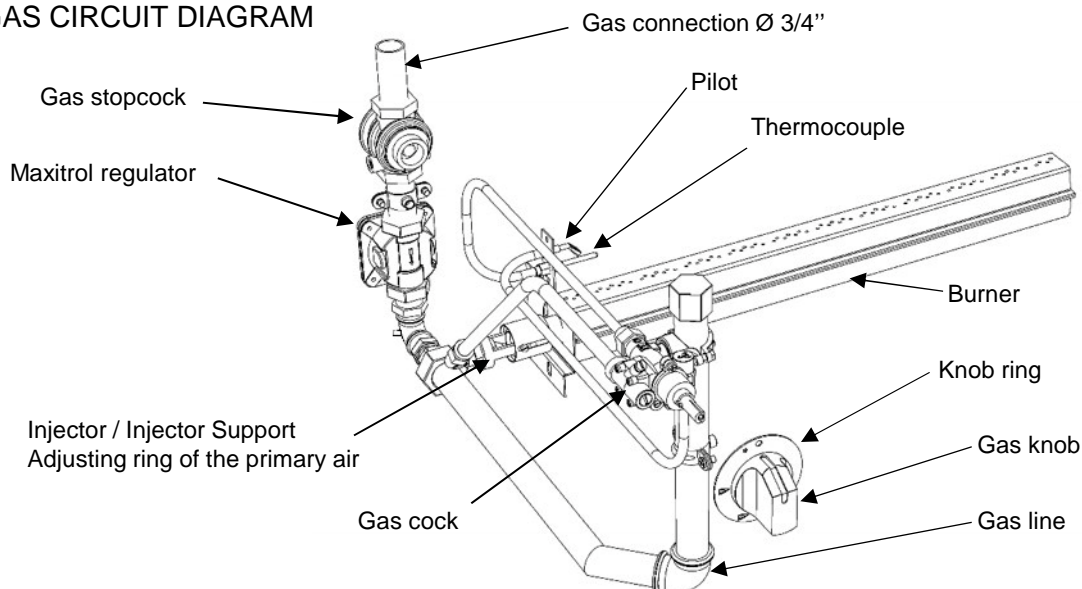
The gas supply conduct will be sized to minimize losses. Its diameter will be determined according to its path (length, number of bends, tees ...) and of the total power of the rotisserie.

"Check that the adjustments correspond to the nature and pressure of gas distributed in the installation".

CAUTION : The pressure regulator (Maxitrol) supplied with this unit must be set according to the gas used. To check the gas supply pressure to the unit simply connect a manometer to the water column on the pressure tapping located on the connection side of the unit gas when all the burners are ignited.

The gas pressure measured and must be equal to that shown on the rating plate for the gas used. Supply valves gas rotisserie require no adjustment for extra service life.

2.2.1. GAS CIRCUIT DIAGRAM



All this information are the property of Rotisol.

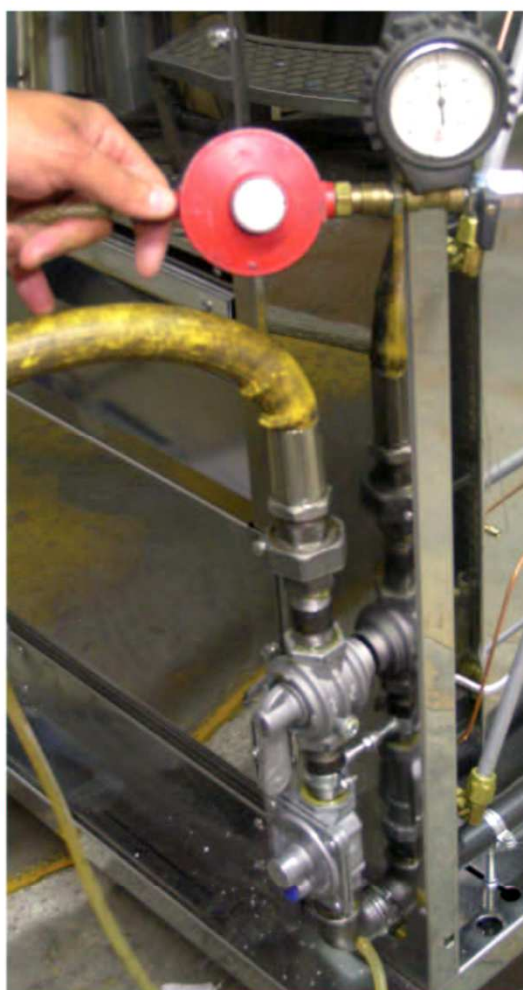
Reproduction partial or in totality are prohibited without authority prior written of company Rotisol.

SETTING THE REGULATOR MAXITROL (USA)

This operation is to be performed during the first test run after connecting the device.



- Remove the screw closure of the pressure tap with a screwdriver.



- Connecting a pressure gauge to the pressure tap by means of a rubber hose.
- Open the gas valve of the rotisserie.
- Light the burners of the rotisserie.



- Remove the screw of protection of regulator setting with a screwdriver.

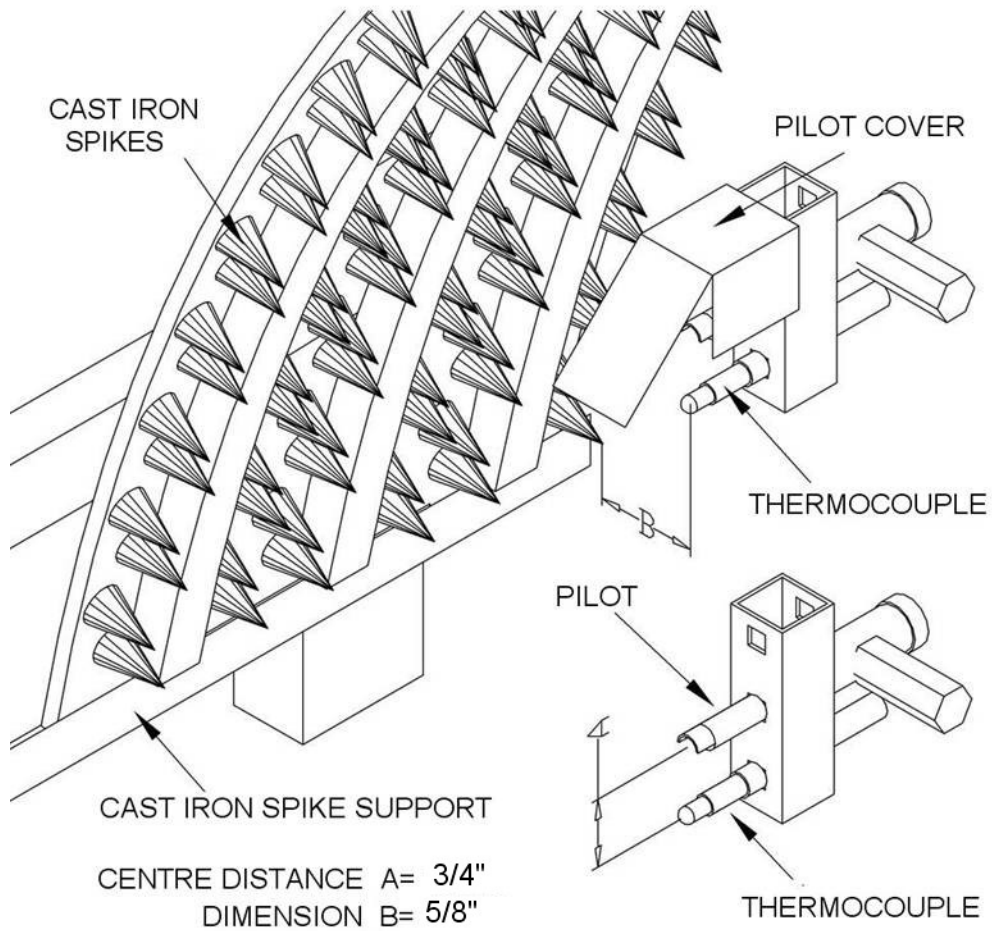


- Turn the adjustment screw with a screwdriver so that the pressure gauge reading corresponds to the pressure applied.

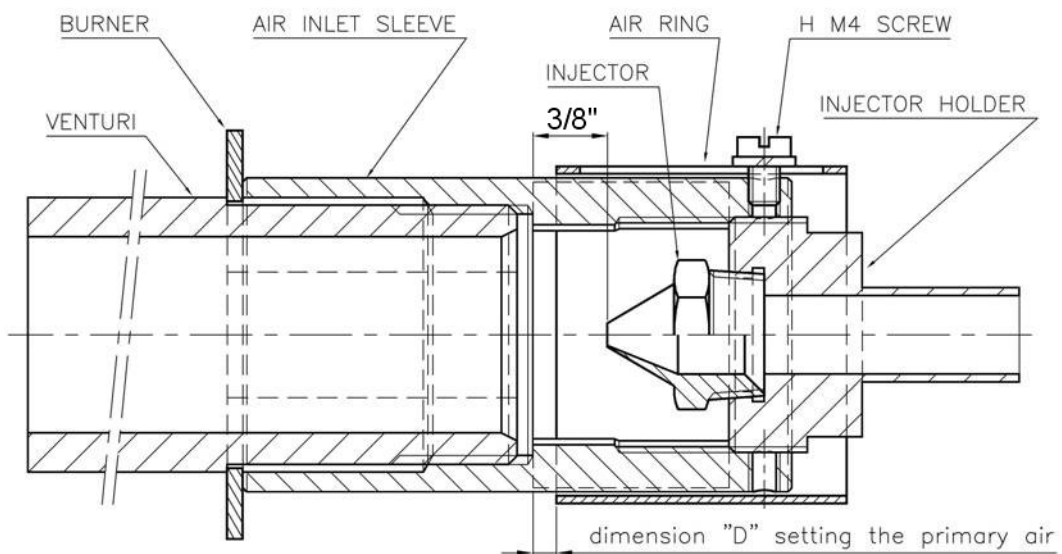


- Replace the screw of protection of regulator setting.
- Turn off the burners.
- Close the gas valve of the rotisserie.
- Remove the connecting tube the pressure gauge.
- Replace the screw closure of the pressure tap.

2.2.2. POSITION OF THE THERMOCOUPLE & PILOT LIGHT

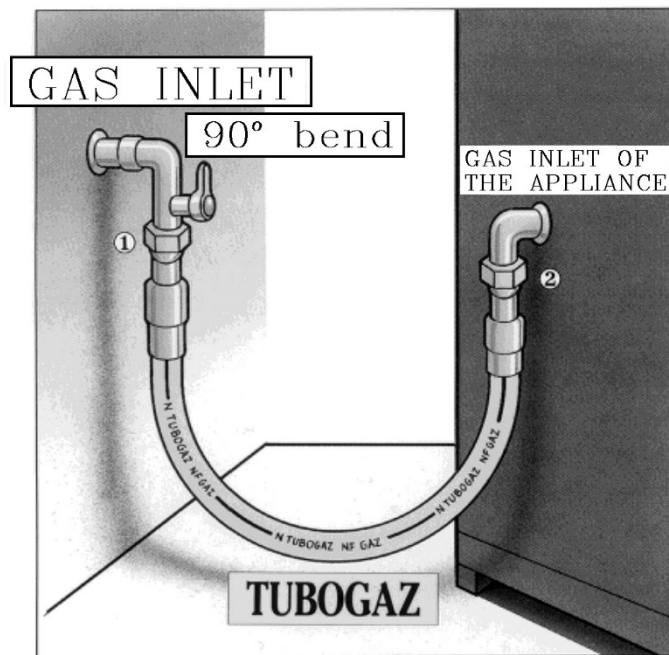


2.2.3. POSITION OF THE INJECTOR AND THE SLEEVE FOR THE AJUSTMENT OF THE PRIMARY AIR.



2.2.4. FIXED INSTALATION – MOBILE INSTALATION

FIXED



Connection type union 1 or 2

The use of **TURBOGAZ** or **similar** in professional fixed instalations, will permit a total liberty in the conception of the kitchen.

MOBILE

The conception of a kitchen with mobile gas appliance is possible thanks to a tandem of TURBOGAZ – TUSHGAS or SIMILAR.

FLEXIBLE PIPING IN THE SHAPE OF U

Measure of the gas flow under 20 mbar in kW/h PCI (natural gaz)

	Ø1/2" R* = 90 mm		Ø 3/4" R* = 110 mm		Ø1" R* = 130 mm	
	Without PUSHGAZ	With PUSHGAZ	Without PUSHGAZ	With PUSHGAZ	Without PUSHGAZ	With PUSHGAZ
0,50 m	25,3	21,5	93,6	80,6	186,2	129,4
0,75 m	21,6	19,0	81,7	69,4	160,9	120,3
1,00 m	19,4	17,5	76,8	67,9	144,9	116,4
1,25 m	18,2	16,5	71,0	64,0	131,8	106,4
1,50 m	17,0	15,7	66,5	60,2	120,3	98,8
2,00 m	14,2	13,2	58,8	54,9	107,2	93,0

*R = minimum bend radius of hose

These flow are given for conditions of reference, note

: Temperature 15°C

: Atmospheric pressure : 1013 mbar

: Dry air

- The hose must not touch a hot wall
- For safety, please install a shorter cable or chain than the gas pipe between the rotisserie and a fixed wall.

All this information are the property of Rotisol.

Reproduction partial or in totality are prohibited without authority prior written of company Rotisol.

2.3. ELECTRICAL CONNECTION

Check that there is no errors with **CONNECTION**.

- Electrical rating : 208-230V~60Hz.
- Check that the installed power corresponds with the characteristics on the signal plate at the rear of the unit.

**IN ALL CASES , CONNECT THE EARTH WIRE
THE UNIT IS DELIVERED IN MONOPHASE + EARTH**

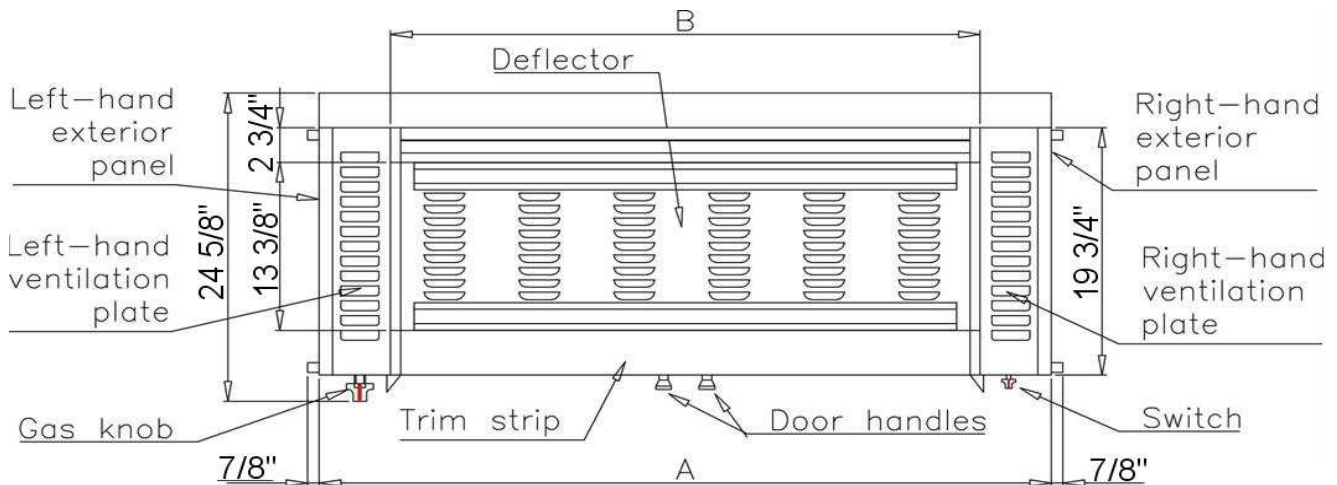
AVERTISSEMENT : Pour une protection continue contre le feu et les décharges électriques, remplacer les fusibles de 10 ampères

WARNING : For continued protection against fire and electric shock replace with 10 Ampere fuse

2.4. EVACUATION - SMOKE TYPE : A

- The unit is destined to be installed under an extraction system with ventilation
- A heat detector with holes is placed above the rotisserie

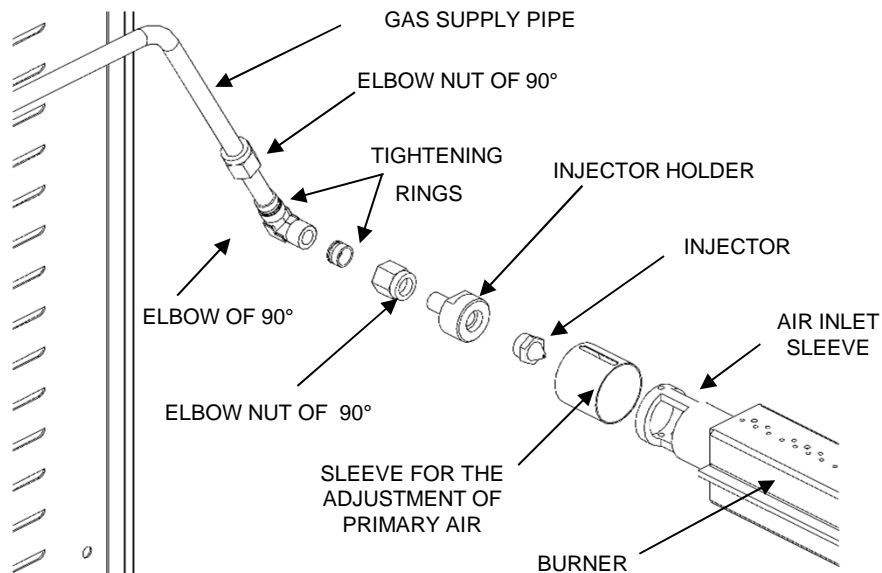
VIEW FROM ABOVE



Reference	Measurement A (inch)	Measurement B (inch)
1675.8x	66"	54 5/8"
1375.12x	54 1/8"	42 3/4"
1375.8x	54 1/8"	42 3/4"
1375.6x	54 1/8"	42 3/4"
1375.5x	54 1/8"	42 3/4"
1375.4x	54 1/8"	42 3/4"
1375.2x	54 1/8"	42 3/4"
975.8x	38 3/8"	27"
975.6x	38 3/8"	27"
975.5x	38 3/8"	27"
975.4x	38 3/8"	27"
975.2x	38 3/8"	27"

3. ADAPTING THE UNIT IN THE CASE OF CHANGING FROM ONE GAS TO ANOTHER

3.1. CHANGING THE INJECTOR



3.3. ADJUSTMENT OF THE PRIMARY AIR

You need to adjust the opening of the air sleeve to dim. **D** corresponding to the type of gas used (see position of the air sleeve, chapter 2.2.3 and the table of adjustment of the burner, chapter 3.3).

3.4. TABLE FOR ADJUSTMENT OF ONE BURNER

MODEL	* CHARACTERISTICS	G20 under 20 mbar	G25 under 25 mbar	G31 under 37 mbar	G31 under 50 mbar
975x	injector making	250	250	165	150
	Diameter of injector in mm / inch	2,5 / 0,0984	2,5 / 0,0984	1,65 / 0,0650	1,5 / 0,0591
	Opening of the primary air « D » in mm (chapitre 2.2.3)	2,5	2,5	5	4
	Flow volumein ft ³ /h	37,44	43,44	-	-
	Mass flow Lbs/h	-	-	1,71	1,71
	Reduced heat flow in btu/h	18000	18000	18000	18000
	Presure at the tap for the reduced flow in mbar	5	6,5	9,5	12,5
1375x	injector making	290	290	200	180
	Diameter of injector in mm / inch	2,9 / 0,1142	2,9 / 0,1142	2 / 0,0787	1,8 / 0,0709
	Opening of the primary air « D » in mm (chapitre 2.2.3)	2,5	2,5	5	4
	Flow volumein ft ³ /h	56,16	65,34	-	-
	Mass flow Lbs/h	-	-	2,56	2,56
	Reduced heat flow in btu/h	26000	26000	26000	26000
	Presure at the tap for the reduced flow in mbar	5	6,5	9,5	12,5
1675x	injector making	400	400	215	190
	Diameter of injector in mm / inch	4 / 0,1574	4 / 0,1574	2,15 / 0,0847	1,9 / 0,0748
	Opening of the primary air « D » in mm (chapitre 2.2.3)	13,5	13,5	5	4
	Flow volumein ft ³ /h	63,57	73,8	-	-
	Mass flow Lbs/h	-	-	2,91	2,91
	Reduced heat flow in btu/h	30000	30000	30000	30000
	Presure at the tap for the reduced flow in mbar	5	5	9,5	12,5

* Refer to the nameplates.

- Remove the outer panel left



- With a 23 key loosen the nut on the valve supply pipe gas burner.



- With a wrench 19 to loosen the nut 90 ° elbow on the gas supply pipe by blocking the 90 ° elbow with a wrench 17.
- Turn the gas supply pipe up.



- Remove all 90 ° elbow, injector holder and injector by unscrewing the set completely.



- Unscrew the injector with a wrench de17 blocking the injector holder with a wrench 24.



- Tighten but without forcing the new injector on the injector holder.



- Refit the 90 ° elbow, injector holder and injector.



- Using a wrench 7, loosen the screw holding the ring of air and pull back out.



- Using a wedge, adjust the position of the injector to the coast of 3/8" compared to the inside of the air intake sleeve (see instructions installer, chapter position of the injector and setting ring of the primary air).



- Using the keys used during disassembly reposition the gas supply pipe.



- Using a wedge to adjust dimension "D" position of the ring of air over the inner sleeve of the air intake (see Table installer instructions "setting a burner") .



- Block the air ring with the wrench 7.
- Make a complete leak test gas circuit.
- Replace the outer panel.

Rotisol

CONTROL CIRCUIT GAS SEAL WITH A SPRAY DETECTOR GAS LEAK.

- Remove the outer panel left.
- Connect to the network rotisserie gas.
- Light the burners.



- Using a spray can "leak detector gas" spray in the direction of all the connection point of the circuit gas.



- If there is rapid formation and / or bursting of large bubbles, review the application and assembly of components for connecting the gas line.
- Repeat until the complete elimination of bubbles.
- Turn off burner.
- Replace the outer panel left.

All this information are the property of Rotisol.

Reproduction partial or in totality are prohibited without authority prior written of company Rotisol.

3.4. LABEL SET

The label specifying the setting of gas to the appliance must be attached to it (see mandatory, chapter 1.4.). In case of change of gas, the new label comes with the new injectors.

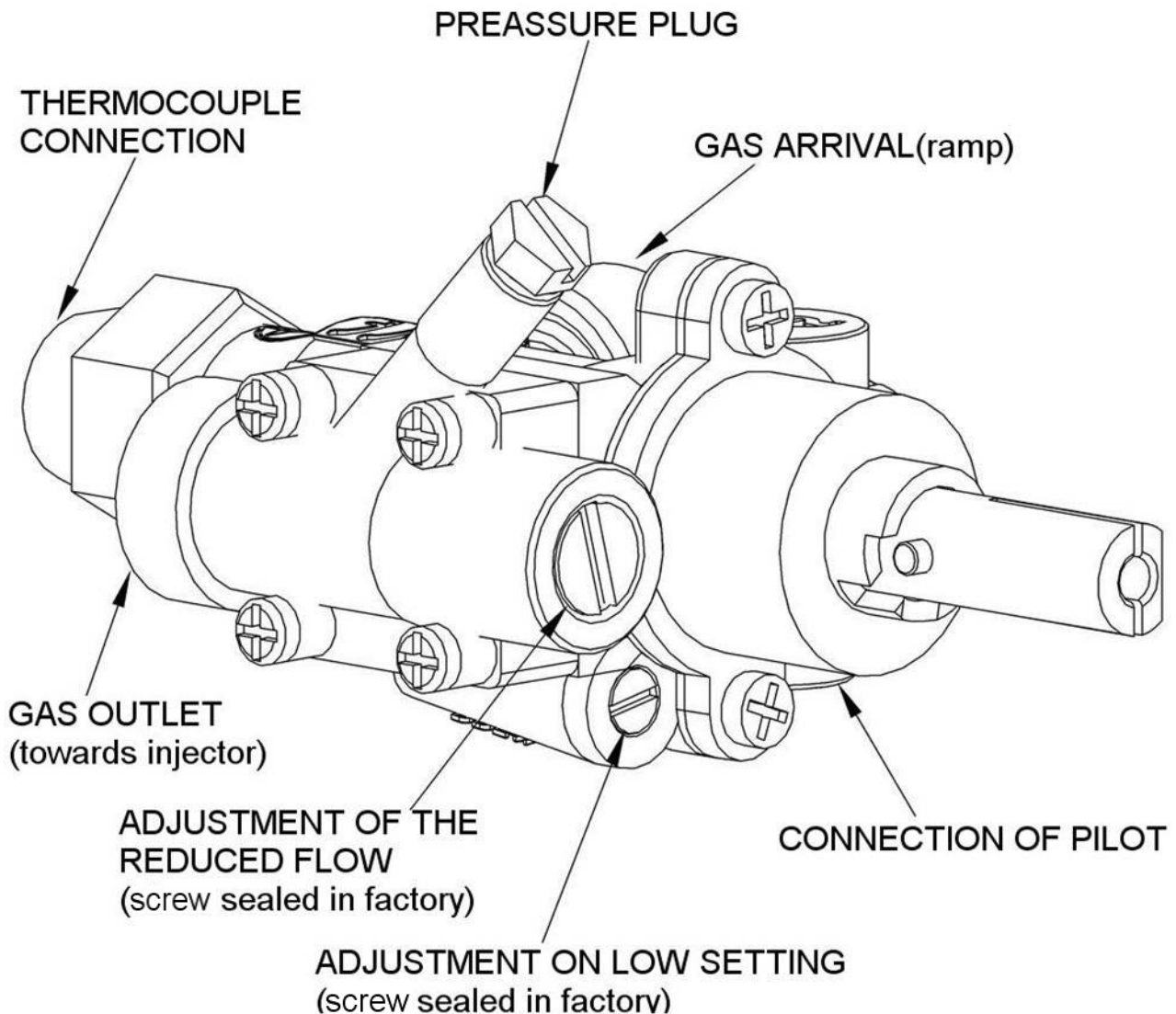
3.5. ADJUSTMENT OF THE PILOT

For natural gas (G20 et G25), unscrew only a $\frac{1}{4}$ of a turn the vis pointe 3 and check that the flame Heat the thermocouple correctly.

For propane gas (G31), turn the vis pointe fully without blocking it:

SEAL THE ADJUSTMENT

3.6. ADJUSTEMENT OF THE REDUCE FLOW



3.6.1. ADJUSTMENT OF REDUCED FLOW

Connect a manometer on the pressure plug and adjust to the pressure required (see table of : categories of gas, chapter 3.1.1) with the aide of the reduced flow screw:

SEAL THE ADJUSTMENT.

3.6.2. ADJUSTMENT OF LOW SETTING

Put the tap to the « minimum » setting.

Connect a manometer on the preassure plug and adjust the pressure to that require) with the help of the low setting screw.

SEAL THE ADJUSTMENT



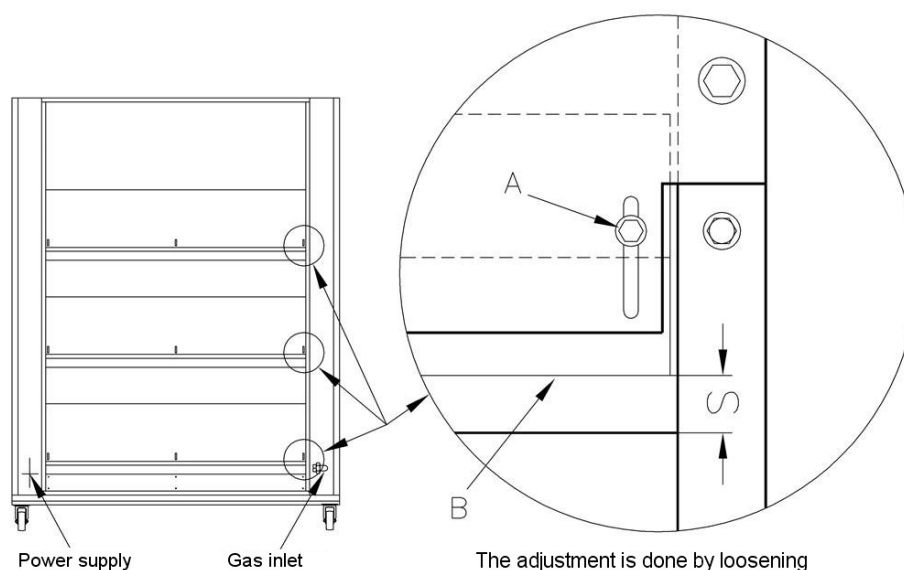
- Unscrew with a screwdriver and remove the protective cap of the screw.



- Act with a screwdriver on the screw making sure that the flame heats the thermocouple correctly.
- Replace and tighten the protection cap.

3.7. TABLE FOR THE ADJUSTMENT OF THE SECONDARY AIR

MODEL	SHUTER	Dim « S » in G20 under 20 mbar	Dim « S » in G25 under 25 mbar	Dim « S » in G31 under 37 mbar	Dim « S » in G31 under 50 mbar
975.2x	UPPER	1/4"	1/4"	1/4"	1/4"
975.4x	UPPER	1/4"	1/4"	1/4"	1/4"
	MIDDLE	1/4"	1/4"	1/4"	1/4"
975.5x	UPPER	1/4"	1/4"	1/4"	1/4"
	MIDDLE	1/4"	1/4"	1/4"	1/4"
975.6x	UPPER	1/4"	1/4"	1/4"	1/4"
	MIDDLE	1/4"	1/4"	1/4"	1/4"
	LOWER	closed	closed	closed	closed
975.8x	UPPER	1/4"	1/4"	1/4"	1/4"
	MIDDLE	1/4"	1/4"	1/4"	1/4"
	LOWER	closed	closed	closed	closed
1375.2x	UPPER	1/4"	1/4"	1/4"	1/4"
1375.4x	UPPER	1/4"	1/4"	1/4"	1/4"
	MIDDLE	1/4"	1/4"	1/4"	1/4"
1375.5x	UPPER	1/4"	1/4"	1/4"	1/4"
	MIDDLE	1/4"	1/4"	1/4"	1/4"
1375.6x	UPPER	1/4"	1/4"	1/4"	1/4"
	MIDDLE	1/4"	1/4"	1/4"	1/4"
	LOWER	closed	closed	closed	closed
1375.8x	UPPER	1/4"	1/4"	1/4"	1/4"
	MIDDLE	1/4"	1/4"	1/4"	1/4"
	LOWER	closed	closed	closed	closed
1375.12x	UPPER	1/4"	1/4"	1/4"	1/4"
	MIDDLE	1/4"	1/4"	1/4"	1/4"
	LOWER	closed	closed	closed	closed
1675.8x	UPPER	1/4"	1/4"	1/4"	1/4"
	MIDDLE	1/4"	1/4"	1/4"	1/4"
	LOWER	closed	closed	closed	closed

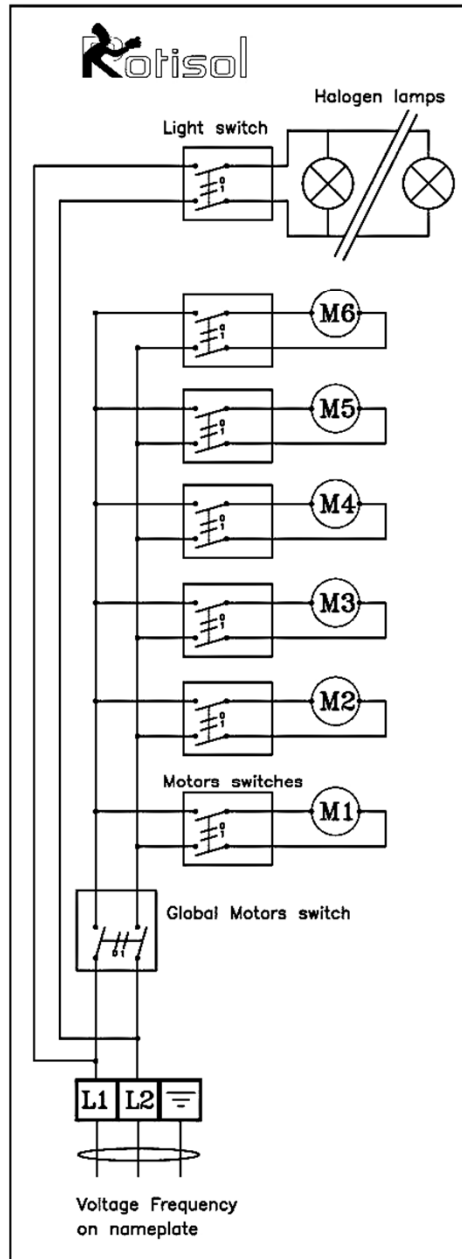


4. ELECTRICAL DRAWING

- _ Engines and terminal are located inside the right amount
- _ Switches and white pilot are located on the front of the unit on the right side.
- _ The one or many halogen lamps are located in the stip.



208-240~60Hz

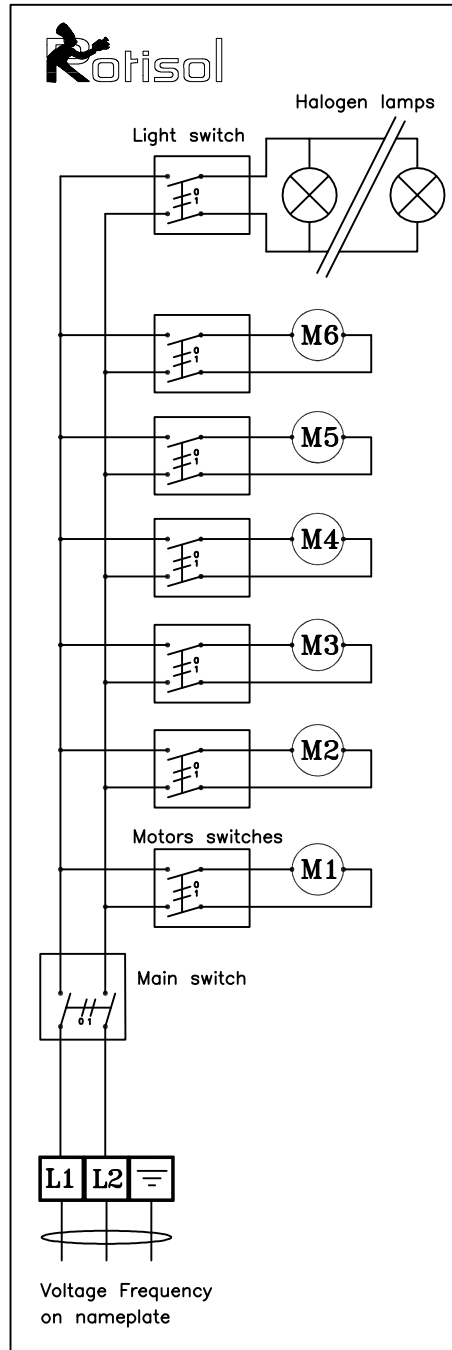


- For the rotisserie 1675.8x, there are 8 motors and 2 halogen lamps*
- For the rotisserie 1375.8x, there are 8 motors and 2 halogen lamps.*
- For the rotisserie 1375.5x, there are 5 motors and 2 halogen lamps.*
- For the rotisserie 1375.4x, there are 4 motors and 2 halogen lamps.*
- For the rotisserie 1375.2x, there are 3 motors and 2 halogen lamps.*
- For the rotisserie 975.8x, there are 8 motors and 1 halogen lamp.*
- For the rotisserie 975.6x, there are 6 motors and 1 halogen lamp.*
- For the rotisserie 975.5x, there are 5 motors and 1 halogen lamp.*
- For the rotisserie 975.4x, there are 4 motors and 1 halogen lamp.*
- For the rotisserie 975.2x, there are 3 motors and 1 halogen lamp.*

ELECTRICAL DIAGRAM OF THE ROTISSERIE

Ref.: 1375.6MG

208-240~60Hz



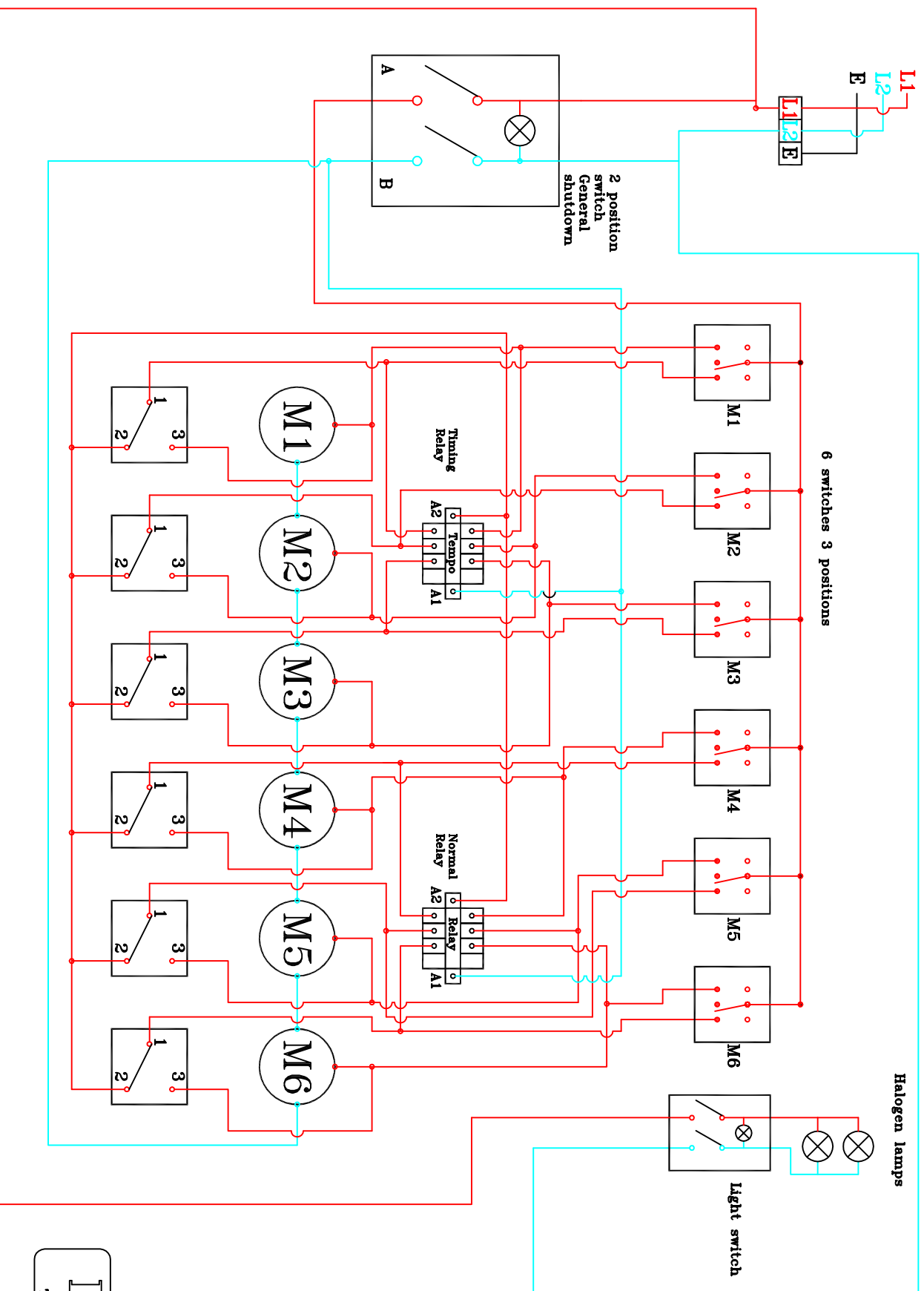
_ For the rotisserie 1375.6, there are 6 motors and 2 halogen lamps.

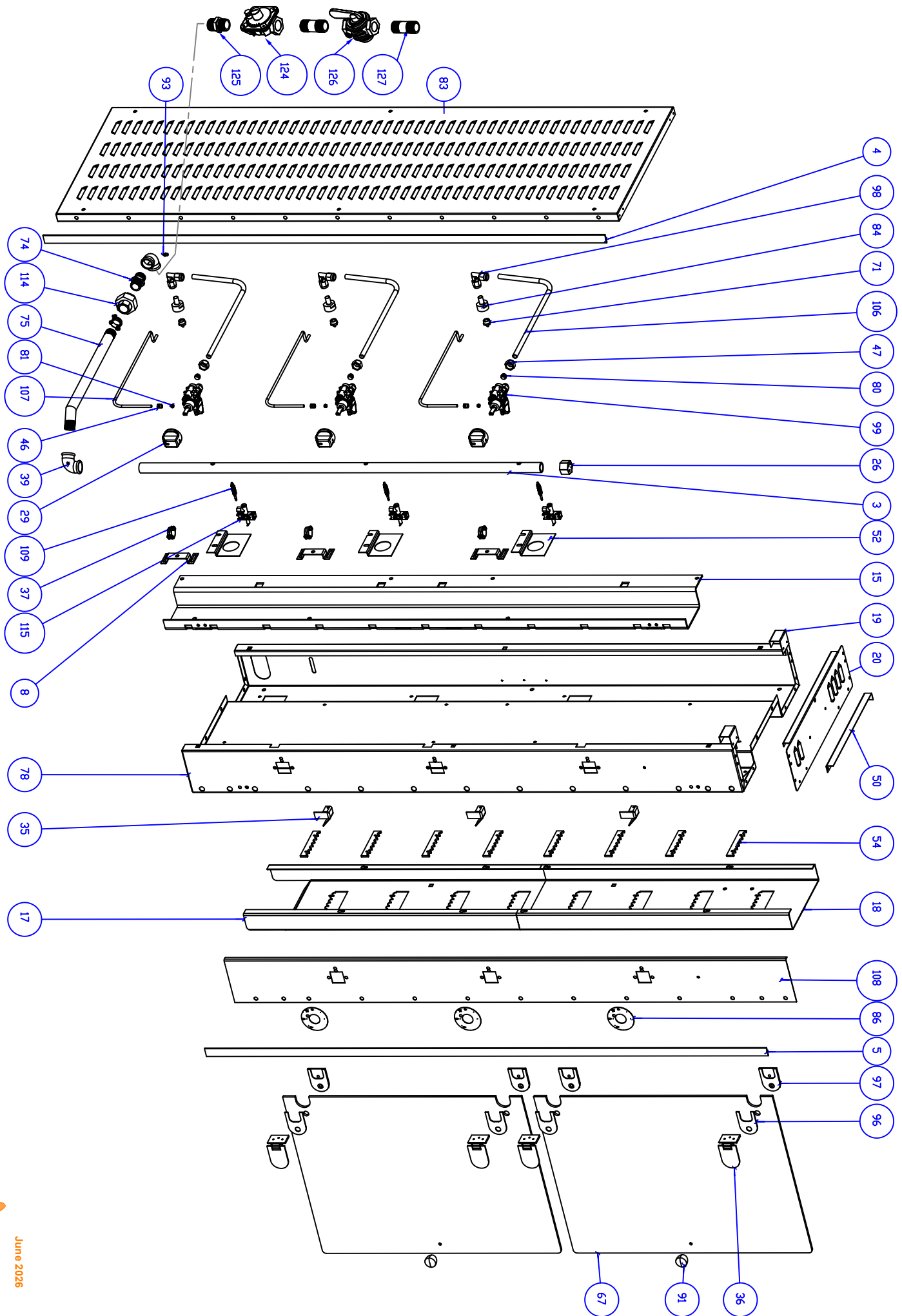


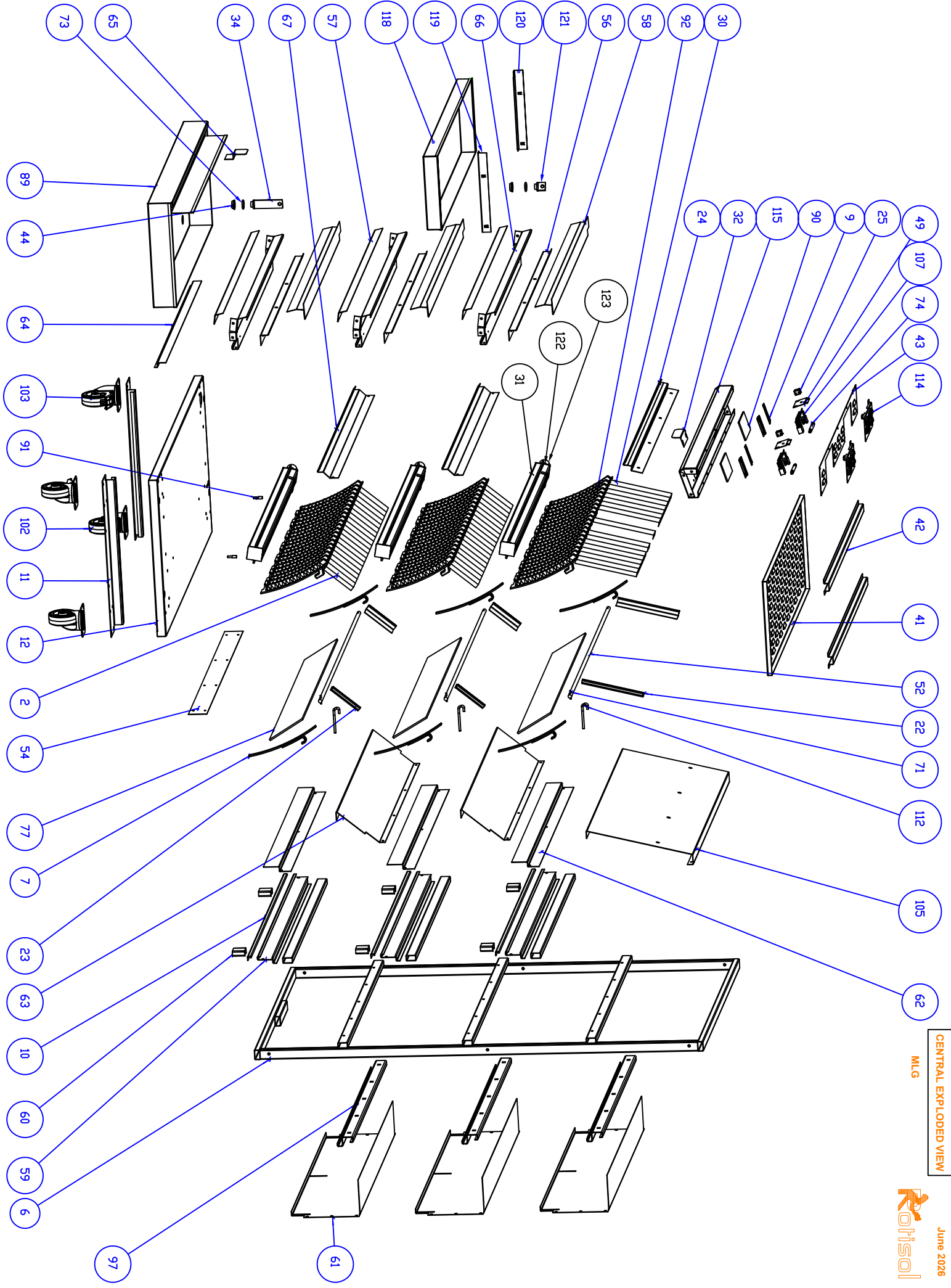
ELECTRICAL DIAGRAM OF THE ROTISSERIE

Ref.: 1375.6MAG Spatch King

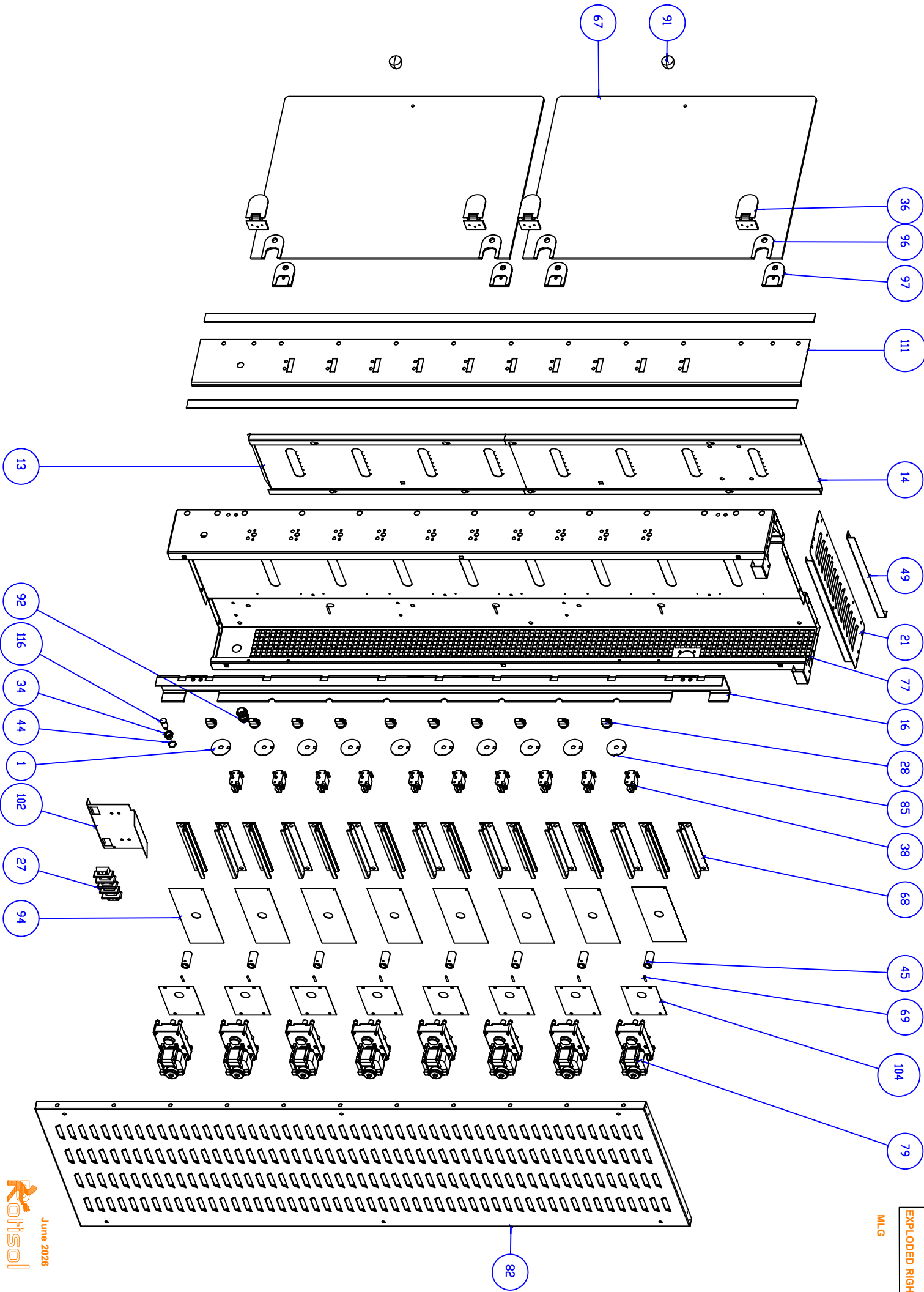
208-240~60HZ







CENTRAL EXPLODED VIEW
MLG



975.8MLG		975.5MLG		975.2MLG		1675.8MLG		REP	Designation
CODE	QTE	CODE	QTE	CODE	QTE	CODE	QTE		
22-12-01-02	10	22-12-01-02	5	22-12-01-02	5	22-12-01-02	10	1	Chrome rosette for Comrot 1
BR12205415 LG = 120	24	BR12205415 LG = 120	12	-	-	BR12205415 LG = 120	50	2	VAUGIARD LEOPARD PLATE
24-02-11-006	1	24-02-06-006	1	1MAM2602027	1	24-02-11-006	1	3	20"27 TUBE LG=
24-02-11-17	2	23-03-12-17	2	23-11-04-17	2	24-02-11-17	2	4	25mm Fitting
24-02-11-18	2	23-03-12-18	2	23-11-04-18	2	24-02-11-18	2	5	25mm Fitting
24-04-01-04	1	24-02-06-04	1	124-04-08-04	1	24-10-08-04	1	6	GF REAR FRAME
-	-	-	-	-	-	24-02-11-19	6	7	13mm STIP SUPPORT
25-03-02-010	3	25-03-02-010	3	25-03-02-010	3	-	-	8	ATLAS COLLAR SUPPORT
25-05-10-002	2	25-05-10-002	2	25-05-10-002	2	25-05-10-002	2	9	GLASS PLATE LOCKING LEG
975-2GE202	2	975-2GE202	2	975-2GE202	2	16755_RAIDISSEUR_PICOT	2	10	STIFFENER FOR STIP PLATES
13758E601	2	-	-	-	-	13758E601	2	11	WHEEL SUPPORT
9758G01	1	9758G01	1	9758G01	1	16758G0101_TABLE	1	12	1375 MLG TABLE
13758G0401_BASEVOL2	1	-	-	-	-	13758G0401_BASEVOL2	1	13	Lower Parabolic Dish, Motor Side
13758G0401_HAUTVOL2	1	CMGF50101	1	9752E0603	1	13758G0401_HAUTVOL2	1	14	Upper Parabolic Dish, Motor Side
-	-	-	-	-	-	13758G0801_EVOLU3	1	15	1675-8G GAS SIDE HINGE REINFORCEMENT
-	-	-	-	-	-	13758G0901_EVOL3	1	16	1675-8G MOTOR SIDE HINGE REINFORCEMENT
13758G15_SUPPORTES_BROCHES3_PLA	1	SUPBRGF50101	1	9752G0502_EVOLUTION_3	1	13758G15_SUPPORTES_BROCHES3_PLA	1	17	Lower Parabolic Dish, Pins
13758G16_SUPPORTES_BROCHES3_PLA	1	-	-	-	-	13758G16_SUPPORTES_BROCHES3_PLA	1	18	Upper Parabolic Dish, Pins
13758G18	4	13758G18	4	13758G18	4	13758G18	4	19	Exterior Panel Stop
13758G39	1	13758G39	1	13758G39	1	13758G39	1	20	Top of Left Upright
13758G40	1	13758G40	1	13758G40	1	13758G40	1	21	Top of Right Upright
13758G46_COMPLEMENT_BRIQUES_HT	2	13758G46_COMPLEMENT_BRIQUES_HT	1	13758G46_COMPLEMENT_BRIQUES_HT	1	13758G46_COMPLEMENT_BRIQUES_HT	2	22	TOP BRICK SUPPORT SHEET
13758G47_COMPLEMENT_BRIQUES	3	13758G47_COMPLEMENT_BRIQUES	1	-	-	13758G47_COMPLEMENT_BRIQUES	4	23	MID-CENTER BRICK SUPPORT SHEET
GFMI595_MAINTIENT_BRIQUE_2_HAUT	1	GFMI595_MAINTIENT_BRIQUE_2_HAUT	1	GFMI595_MAINTIENT_BRIQUE_2_HAUT	1	GFMI8165_MAINTIENT_BRIQUES_2	1	24	TOP BRICK SUPPORT CRAPAUDINE
B34332	2	B34332	1	B34332	1	B34332	2	25	Square porcelain terminal
BFF2027	1	BFF2027	1	BFF2027	1	BFF2027	1	26	CAST IRON FEMALE CAP
BORAL904A	1	BORAL904A	1	BORAL904A	1	BORAL904A	1	27	Screw-in terminal block
BOUCOM5214	10	BOUCOM5214	7	BOUCOM5214	5	BOUCOM5214	10	28	Gold knob for Comrot
BOUROB5211	3	BOUROB5211	1	BOUROB5211	1	BOUROB5211	3	29	GOLD KNOB GAS VALVE
BR12205415 LG=220	12	BR12205415 LG=220	12	BR12205415 LG=220	12	BR12205415 LG=220	25	30	VAUGIARD LEOPARD PLAQUE
BRU950NM	3	BRU950NM	3	BRU950NM	3	BRU1650NM	3	31	BURNER
BUTGLCAT0101	1	-	-	-	-	BUTGLCAT0101	1	32	Ice stop
BV5000	1	BV5000	1	BV5000	1	BV5000	1	33	Drain plug
BVRC1216	1	BVRC1216	1	BVRC1216	1	BVRC1216	1	34	Indicator light holder
CACHEVEILL0101	3	CACHEVEILL0101	2	CACHEVEILL0101	1	CACHEVEILL0101	3	35	PILOT LIGHT COVER
CHAGF	8	CHAGF	4	CHAGF	4	CHAGF	8	36	Large Flame Hinge
COL26	4	COL26	3	COL26	2	COL26	2	37	ATLAS COLLAR D=26
COMROT	10	COMROT	7	COMROT	5	COMROT	10	38	2-position rotary switch
COU90	2	COU90	2	COU90	2	COU90	2	39	BLACK CAST IRON ELBOW F/F - 20/27
DES103	1	DES103	1	DES103	1	GFDES16	1	40	LUGGED TOP
-	-	-	-	-	-	24-10-08-010	2	41	LUGGED TOP STIFFENER
DTRAVAVGF9750101	1	DTRAVAVGF9750101	1	DTRAVAVGF9750101	1	DTRAVAVGF16750101	1	42	1375 GAS TRANSMISSION TOP
EBV285	2	EBV285	2	EBV285	2	EBV285	2	43	SM/GF DRAIN PLUG NUT
ECROU1216C	1	ECROU1216C	1	ECROU1216C	1	ECROU1216C	1	44	Indicator light holder nut
EH1212	8	EH1212	5	EH1212	3	EH1412	8	45	Hexagonal end
EPEL10	3	EPEL10	2	EPEL10	2	EPEL10	3	46	NUT FOR PILOT LIGHT GAS VALVE PEL22
EPEL20	3	EPEL20	2	EPEL20	1	EPEL20	3	47	GAS VALVE NUT - PEL TYPE S22
FISUPHAL0102	2	FISUPHAL0102	1	FISUPHAL0102	2	FISUPHAL0102	2	48	HALOGEN SUPPORT FIXING
GDD0101	1	GDD0101	1	GDD0101	1	GDD0101	1	49	LUGGED TOP GUIDE
GDOG0101	1	GDOG0101	1	GDOG0101	1	GDOG0101	1	50	GUIDE LEFT TOP WITH LUG-ON OPENINGS
GF007A	3	GF007A	2	GF007A	1	BARPLPICOT1650	3	51	GF924 HAND-HAND BAR
GF13_CACHE_GROS_VENTURIE	2	GF13_CACHE_GROS_VENTURIE	2	GF13_CACHE_GROS_VENTURIE	2	GF13_CACHE_GROS_VENTURIE	3	52	VENTURI COVER
975-2GES101	1	975-2GES101	1	975-2GES101	1	GF16CU10_PLAQUE_ARRIERE_BAS_165	1	53	LOWER REAR PLATE
GF755UPLA1TR	8	GF755UPLA1TR	5	GF755UPLA1TR	3	GF755UPLA1TR	8	54	Millennium Spindle Support Plate
GFMA1BR21_MAINTIENT_BRULEUR_ARR	3	GFMA1BR21_MAINTIENT_BRULEUR_ARR	2	GFMA1BR21_MAINTIENT_BRULEUR_ARR	1	GFMA1BR21_MAINTIENT_BRULEUR_ARR	3	55	BURNER REAR SUPPORT
975-2GE4001	3	975-2GE4001	2	975-2GE4001	1	24-10-08-006	3	56	BURNER SUPPORT REINFORCEMENT
GFCA950_CACHE_BRULEUR	2	GFCA950_CACHE_BRULEUR	2	GFCA950_CACHE_BRULEUR	2	24-10-08-008	3	57	BURNER COVERS
975-2GE4101	3	975-2GE4101	2	975-2GE4101	1	1675_SUPPORT_PICOT	3	58	HAND-HAND SUPPORT
GF13812	6	GF13812	4	GF13812	2	GF13812	6	59	HAND-HAND SPACER
GFAR951_ARRIERE_NM	2	GFAR951_ARRIERE_NM	2	GFAR951_ARRIERE_NM	2	GFAR1651_ARRIERE_NM	2	60	REAR
GFREG950_REGLAGE_PRISE_D_AIR	3	GFREG950_REGLAGE_PRISE_D_AIR	2	GFREG950_REGLAGE_PRISE_D_AIR	1	GFREG165_REGLAGE_PRISE_D_AIR	3	61	AIR DRAWER SHEET
GFAR950_MILIEU_NM	2	GFAR950_MILIEU_NM	1	-	-	GFAR950_MILIEU_NM_1650	2	62	CENTER BRICK SUPPORT
GF59590_BLOCCAGE_PLAT	1	GF59590_BLOCCAGE_PLAT	1	GF59590_BLOCCAGE_PLAT	1	16758G21_ARRIERE_PLAT	1	63	MLG FLAT LOCKING SHEET
GF59517	1	GF59517	1	GF59517	1	GF59517	1	64	Flat Glass Stop
GF8095_SUPPORT_BRULEUR_950_975	2	GF8095_SUPPORT_BRULEUR_950_975	2	GF8095_SUPPORT_BRULEUR_950_975	2	GF81660_SUPPORT_BRULEUR	2	65	BURNER SUPPORT
GF_MA1M84_MAINTIENT_BRIQUE	2	GF_MA1M84_MAINTIENT_BRIQUE	1	-	-	24-10-08-007	2	66	BRACKET BRICK SUPPORT
GL2148	4	GL2088	2	GL2078	2	GL2168	4	67	GF KGLASS SECURITY GLASS
GLUSSIÈRE	16	GLUSSIÈRE	10	GLUSSIÈRE	6	GLUSSIÈRE	16	68	Motor Slide
GOUSM420	8	GOUSM420	5	GOUSM420	3	GOUSM420	8	69	4x20 Pin
GOUSM430	6	GOUSM430	4	GOUSM430	2	GOUSM430	6	70	4x20 Pin
INJECTEUR	3	INJECTEUR	2	INJECTEUR	1	INJECTEUR	3	71	Injector
JOOR204	2	JOOR204	2	JOOR204	1	JOOR204	2	72	O-Ring
LA150119	2	LA150119	1	LA150119	1	LA150119	2	73	Halogen Bulb
MAM2802027	1	MAM2802027	1	MAM2802027	1	MAM2802027	1	74	M/M 20x27 NIIPPLE
MAM58322	1	MAM58322	1	MAM58322	1	MAM58322	1	75	ANGLED NIIPPLE FOR GF
MILLBOARD975	3	MILLBOARD975	2	MILLBOARD975	1	MILLBOARD1675	3	76	MILLBOARD PANELS
MNTDGF80103_EVO3	1	GF652102_MONATNT_DE_DROITE_CINC	1	MNTDGF3G0103_EVOLU3	1	MNTDGF80103_EVO3	1	77	RIGHT UPRIGHT
MNTGGF80102_EVO3	1	MNTGGF5G0101	1	MNTGGF3-3G0102EVO3	1	MNTGGF80102_EVO3	1	78	LEFT Upright
MOTS0H2230	8	MOTS0H2230	5	MOTS0H2230	3	MOTS0H2230	8	79	Motor
OL22	2	OL22	2	OL22	2	OL22	2	80	OLIVE FOR PEL22 Ø=14-12
OL46	1	OL46	2	OL46	1	OL46	1	81	4 x 6 Through Olive
PANEXTDGF80101	1	PANEXTDGF50101	1	9758E68	1	PANEXTDGF80101	1	82	Right Exterior Panel
PANEXTGGF80101	1	PANEXTGGF50101	1	9758E69	1	PANEXTGGF80101	1	83	Left Exterior Panel
PI6119A	3	PI6119A	2	PI6119A	1	PI6119A	3	84	Injector Holder for Radiant Heater
PLASCOMCIR2-A_D50	10	PLASCOMCIR2-A_D50	7	PLASCOMCIR2-A_D50	5	PLASCOMCIR2-A_D50	10	85	Ø50 Faceplate for Comrot
PLASMGZ_PE22	3	PLASMGZ_PE22	2	PLASMGZ_PE22	1	PLASMGZ_PE22	3	86	Gas Control Faceplate
PLAT975_GAZ	1	PLAT975_GAZ	1	PLAT975_GAZ	1	PLAT16GT	1	87	Grease Trap
PLAVERRE2	1	PLAVERRE2	1	PLAVERRE2	1	PLAVERRE2	1	88	Glass Plate
PLOT2607	2	PLOT2607	2	PLOT2607	2	PLOT2607	2	89	Stainless Steel Pad for GF Tray
PLPICOTS166	12	PLPICOTS166	8	PLPICOTS166	4	PLPICOTS166	27	90	NM Studded Plate
POI1651B	4	POI1651B	2	POI1651B	2	POI1651B	4	91	D=30 Handle for Eco/Display Case
PRETHOS3112020	1	PRETHOS3112020	1	PRETHOS3112020	1	PRETHOS3112020	1	92	53112020 Cable Gland
PRIPPM9	1	PRIPPM9	1	PRIPPM9	1	PRIPPM9	1	93	Pressure Tap
PROTECTION_MOTEUR	8	PROTECTION_MOTEUR	5	PROTECTION_MOTEUR	3	PROTECTION_MOTEUR	8	94	Motor Protection
-	-	-	-	-	-	RA8816	3	95	Frame Stiffener
RAINEXC1	8	RAINEXC1	4	RAINEXC1	4	RAINEXC1	8	96	Rainex CHAGF 1mm
RAINEXC2	8	RAINEXC2	4	RAINEXC2	4	RAINEXC2	8	97	Rainex CHAGF 2mm
RLC125M	3	RLC125M	2	RLC125M	1	RLC125M	3	98	Ø12 Brass Elbow Fitting
ROBS22	2	ROBS22	2	ROBS22	1	ROBS22	2	99	Gas Valve - PEL Type S22
ROU100-1	2	-	-	-	-	ROU100-1	3	100	D=100 Caster - Black - (GF)
ROU100F-1	2	-	-	-	-	ROU100F-1	3	101	D=100 Caster - Black - (GF) with Brake
SUPBORDGF0101	1	SUPBORDGF0101	1	SUPBORDGF0101	1	SUPBORDGF0101	1	102	Right Terminal Block Support Plate
GFAR98NM	1	GFAR98NM	1	GFAR98NM	1	GFAR98NM_SUPPORT_BRIQUE_HAUT	1	103	Brick Support Plate HIGH
SUPPORT_MOTEUR_2	8	SUPPORT_MOTEUR_2	5	SUPPORT_MOTEUR_2	3	SUPPORT_MOTEUR_2	8	104	Engine mounting plate
SUPR75	2	SUPR75	1	SUPR75	1	SUPR75	2	105	Halogen bulb holder
TALU119750	3	TALU119750	2	TALU119750	1	TALU119750	3	106	47,126 inch aluminum tube length
TALU652	3	TALU652	2	TALU652	1	TALU652	3	107	6mm outer diameter x 4mm inner diameter aluminum
TGAZGF80101LUX	1	TGAZGF50101LUX	1	TGAZGF30101LUX	1	TGAZGF80101LUX	1	108	MLG gas control enamel panel
THER600	3	THER600	2	THER600	1	THER600	3	109	1096/600 thermocouple M9x100
TIGE123	3	TIGE123	2	TIGE123	1	TIGE123	15	110	Locking hook rod with pin
TMOTGF80101LUX	1	TMOTGF50101LUX	1	TMOTGF30101LUX	1	TMOTGF80101LUX	1	111	MLG engine control enamel panel
TRAPHALO103	1	TRAPHALO103	1	TRAPHALO103	1	TRAPHALO103	2	112	Halogen access panel
BANDAVGF9750102_8BROCHE	1	BANDAVGF9750102_8BROCHE	1	BANDAVGF9750102_8BROCHE	1	TRAVAV1675			

1375.8MLG				1375.5MLG				1375.2MLG				1375.6MALG				REP	Designation
CODE	QTE			CODE	QTE			CODE	QTE			CODE	QTE				
22-12-01-02	1			22-12-01-02	1			22-12-01-02	1			22-12-01-02	1			1	Chrome rosette for Comrot 1
BRI2205415 LG = 120	38			BRI2205415 LG = 120	19			BRI2205415 LG = 120	38			BRI2205415 LG = 120	38			2	VAUGIARD LEOPARD PLATE
24-02-11-006	1			24-02-06-006	1			MAM2602027	1			24-02-11-006	1			3	20"27 TUBE LG=
24-02-11-17	2			23-03-12-17	2			23-11-04-17	2			24-02-11-17	2			4	25mm Fitting
24-02-11-18	2			23-03-12-18	2			23-11-04-18	2			24-02-11-18	2			5	25mm Fitting
24-02-11-04	1			24-04-06-04	1			24-04-10-04	1			24-02-11-04	1			6	GF REAR FRAME
24-02-11-19	6			24-02-11-19	1			24-02-11-19	1			24-02-11-19	1			7	13mm STIP SUPPORT
25-03-02-010	3			25-03-02-010	2			25-03-02-010	1			25-03-02-010	3			8	ATLAS COLLAR SUPPORT
25-05-10-002	4			25-05-10-002	4			25-05-10-002	4			25-05-10-002	4			9	GLASS PLATE LOCKING LEG
13755_RAIDISSEUR PICOT	2			13755_RAIDISSEUR PICOT	2			13755_RAIDISSEUR PICOT	2			13755_RAIDISSEUR PICOT	2			10	STIFFENER FOR STIP PLATES
13758E601	2			13758E601	2			13758E601	2			13758E601	2			11	WHEEL SUPPORT
13758G01	1			13758G01	1			13758G01	1			13758G01	1			12	1375 MLIG TABLE
13758G0401 BASEVOL2	1			13758G0401	1			13758G0401	1			13758G0401	1			13	Lower Parabolic Dish, Motor Side
13758G0401 HAUTEVOL2	1			CMGF50101	1			9752E0603	1			13756897	1			14	Upper Parabolic Dish, Motor Side
												13756898	1			15	1675-8G GAS SIDE HINGE REINFORCEMENT
																16	1675-8G MOTOR SIDE HINGE REINFORCEMENT
13758G15 SUPPORTES BROCHES3 PLA	1			SUPBRGF50101	1			9752G0502 EVOLUTION 3	1			1375695 SUPPORT BROCHE EVOL3-2	1			17	Lower Parabolic Dish, Pins
13758G16 SUPPORTES BROCHES3 PLA	1											1375695 SUPPORT BROCHE EVOL3-1	1			18	Upper Parabolic Dish, Pins
13758G18	4			13758G18	4			13758G18	4			13758G18	4			19	Exterior Panel Stop
13758G39	1			13758G39	1			13758G39	1			13758G39	1			20	Top of Left Upright
13758G40	1			13758G40	1			13758G40	1			13758G40	1			21	Top of Right Upright
13758G46 COMPLEMENT BRIQUES_HT	2			13758G46 COMPLEMENT BRIQUES_HT	2			13758G46 COMPLEMENT BRIQUES_HT	2			13758G46 COMPLEMENT BRIQUES_HT	2			22	TOP BRICK SUPPORT SHEET
13758G47 COMPLEMENT BRIQUES	4			13758G47 COMPLEMENT BRIQUES	2			13758G47 COMPLEMENT BRIQUES	2			13758G47 COMPLEMENT BRIQUES	4			23	MID-CENTER BRICK SUPPORT SHEET
13GFMAM87 MAINTIENT BRIQUE	1			13GFMAM87 MAINTIENT BRIQUE	1			13GFMAM87 MAINTIENT BRIQUE	1			13GFMAM87 MAINTIENT BRIQUE	1			24	TOP BRICK SUPPORT CRAPAUDINE
B34332	2			B34332	2			B34332	2			B34332	2			25	Square porcelain terminal
BFF2027	1			BFF2027	1			BFF2027	1			BFF2027	1			26	CAST IRON FEMALE CAP
BORAL904A	1			BORAL904A	1			BORAL904A	1			BORAL904A	1			27	Screw-in terminal block
BOUCOM5214	10			BOUCOM5214	7			BOUCOM5214	5			BOUCOM5214	8			28	Gold knob for Comrot
BOUROB5211	3			BOUROB5211	2			BOUROB5211	1			BOUROB5211	3			29	GOLD KNOB GAS VALVE
BRI2205415 LG=220	19			BRI2205415 LG=220	19			BRI2205415 LG=220	19			BRI2205415 LG=220	19			30	VAUGIARD LEOPARD PLAQUE
BRU1350NM2008	3			BRU1350NM2008	3			BRU1350NM2008	3			BRU1350NM2008	3			31	BURNER
BUTGLCAT0101	1							BUTGLCAT0101	1			BUTGLCAT0101	1			32	Ice stop
BV5000	1			BV5000	1			BV5000	1			BV5000	1			33	Drain plug
BVRC1216	1			BVRC1216	1			BVRC1216	1			BVRC1216	1			34	Indicator light holder
CACHEVEILLO101	3			CACHEVEILLO101	2			CACHEVEILLO101	1			CACHEVEILLO101	3			35	PILOT LIGHT COVER
CHAGF	8			CHAGF	4			CHAGF	4			CHAGF	8			36	Large Flame Hinge
COL26	4			COL26	3			COL26	2			COL26	4			37	ATLAS COLLAR D=26
COMROT	10			COMROT	7			COMROT	5			COMROT	2			38	2-position rotary switch
COU90	2			COU90	2			COU90	2			COU90	2			39	BLACK CAST IRON ELBOW F/F - 20/27
DES104_DESSUS 5 BROCHES	2			DES104_DESSUS 5 BROCHES	2			DES104_DESSUS 5 BROCHES	1			DES104_DESSUS 5 BROCHES	2			40	LUGGED TOP
DES105	2			DES105	2			DES105	2			DES105	2			41	LUGGED TOP STIFFENER
DTRAVAVGF13750101_OUIES	1			DTRAVAVGF13750101_OUIES	1			DTRAVAVGF13750101_OUIES	1			DTRAVAVGF13750101_OUIES	1			42	1375 GAS TRANSMISSION TOP
EBV285	1			EBV285	1			EBV285	1			EBV285	1			43	SM/GF DRAIN PLUG NUT
ECROU1216C	1			ECROU1216C	1			ECROU1216C	1			ECROU1216C	1			44	Indicator light holder nut
EH1212	8			EH1212	5			EH1212	3			EH1212	6			45	Hexagonal end
EPEL10	3			EPEL10	2			EPEL10	1			EPEL10	3			46	NUT FOR PILOT LIGHT GAS VALVE PEL22
EPEL20	3			EPEL20	2			EPEL20	1			EPEL20	3			47	GAS VALVE NUT - PEL TYPE S22
FISUPHAL0102	2			FISUPHAL0102	2			FISUPHAL0102	2			FISUPHAL0102	2			48	HALOGEN SUPPORT FIXING
GDO00101	1			GDO00101	1			GDO00101	1			GDO00101	1			49	LUGGED TOP GUIDE
GDOG0101	1			GDOG0101	1			GDOG0101	1			GDOG0101	1			50	GUIDE LEFT TOP WITH LUG-ON OPENINGS
GF0078	3			GF0078	2			GF0078	1			GF0078	3			51	GF9H24 HAND-HAND BAR
GF13 CACHE GROS VENTURIE	3			GF13 CACHE GROS VENTURIE	1			GF13 CACHE GROS VENTURIE	3			GF13 CACHE GROS VENTURIE	3			52	VENTURI COVER
GF13CU10 PLAQUE ARRIERE BAS	1			GF13CU10 PLAQUE ARRIERE BAS	1			GF13CU10 PLAQUE ARRIERE BAS	1			GF13CU10 PLAQUE ARRIERE BAS	1			53	LOWER REAR PLATE
GF75SUPLAITBR	8			GF75SUPLAITBR	3			GF75SUPLAITBR	3			23-07-05-003	2			54	Millennium Spindle Support Plate
GF13807 MAINTIEN BRULEUR	3			GF13807 MAINTIEN BRULEUR	2			GF13807 MAINTIEN BRULEUR	1			GF13807 MAINTIEN BRULEUR	3			55	BURNER REAR SUPPORT
GF13808 MAINTIEN CACHE BRULEUR	3			GF13808 MAINTIEN CACHE BRULEUR	2			GF13808 MAINTIEN CACHE BRULEUR	1			GF13808 MAINTIEN CACHE BRULEUR	3			56	BURNER SUPPORT REINFORCEMENT
GF13809 CACHE BRULEUR	3			GF13809 CACHE BRULEUR	2			GF13809 CACHE BRULEUR	1			GF13809 CACHE BRULEUR	3			57	BURNER COVERS
GF13810 SUPPORT PICOT	3			GF13810 SUPPORT PICOT	2			GF13810 SUPPORT PICOT	1			GF13810 SUPPORT PICOT	3			58	HAND-HAND SUPPORT
GF13812	6			GF13812	4			GF13812	2			GF13812	6			59	HAND-HAND SPACER
GF13817 ARRIERE	3			GF13817 ARRIERE	2			GF13817 ARRIERE	1			GF13817 ARRIERE	3			60	REAR
GF13818 REGLAGE PRISE D AIR	3			GF13818 REGLAGE PRISE D AIR	2			GF13818 REGLAGE PRISE D AIR	1			GF13818 REGLAGE PRISE D AIR	3			61	AIR DRAWER SHEET
GF13819	2			GF13819	1			GF13819	1			GF13819	2			62	CENTER BRICK SUPPORT
GF13819	2			GF13819	1			GF13819	1			GF13819	2			63	MLG FLAT LOCKING SHEET
GF13819	2			GF13819	1			GF13819	1			GF13819	2			64	Flat Glass Stop
GF13819	2			GF13819	1			GF13819	1			GF13819	2			65	BURNER SUPPORT
GF13819	2			GF13819	1			GF13819	1			GF13819	2			66	BRACKET BRICK SUPPORT
GF13819	2			GF13819	1			GF13819	1			GF13819	2			67	GF KGLASS SECURITY GLASS
GF13819	2			GF13819	1			GF13819	1			GF13819	2			68	Motor Slide
GF13819	2			GF13819	1			GF13819	1			GF13819	2			69	4x20 Pin
GF13819	2			GF13819	1			GF13819	1			GF13819	2			70	4x20 Pin
GF13819	2			GF13819	1			GF13819	1			GF13819	2			71	Injector
GF13819	2			GF13819	1			GF13819	1			GF13819	2			72	O-Ring
GF13819	2			GF13819	1			GF13819	1			GF13819	2			73	Halogen Bulb
GF13819	2			GF13819	1			GF13819	1			GF13819	2			74	M/M 20x27 NIPPLE
GF13819	2			GF13819	1			GF13819	1			GF13819	2			75	ANGLED NIPPLE FOR GF
GF13819	2			GF13819	1			GF13819	1			GF13819	2			76	MILLBOARD PANELS
GF13819	2			GF13819	1			GF13819	1			GF13819	2			77	RIGHT UPRIGHT
GF13819	2			GF13819	1			GF13819	1			GF13819	2			78	LEFT Upright
GF13819	2			GF13819	1			GF13819	1			GF13819	2			79	Motor
GF13819	2			GF13819	1			GF13819	1			GF13819	2			80	OLIVE FOR PEL22 Ø=14-12
GF13819	2			GF13819	1			GF13819	1			GF13819	2			81	4 x 6 Through Olive
GF13819</																	