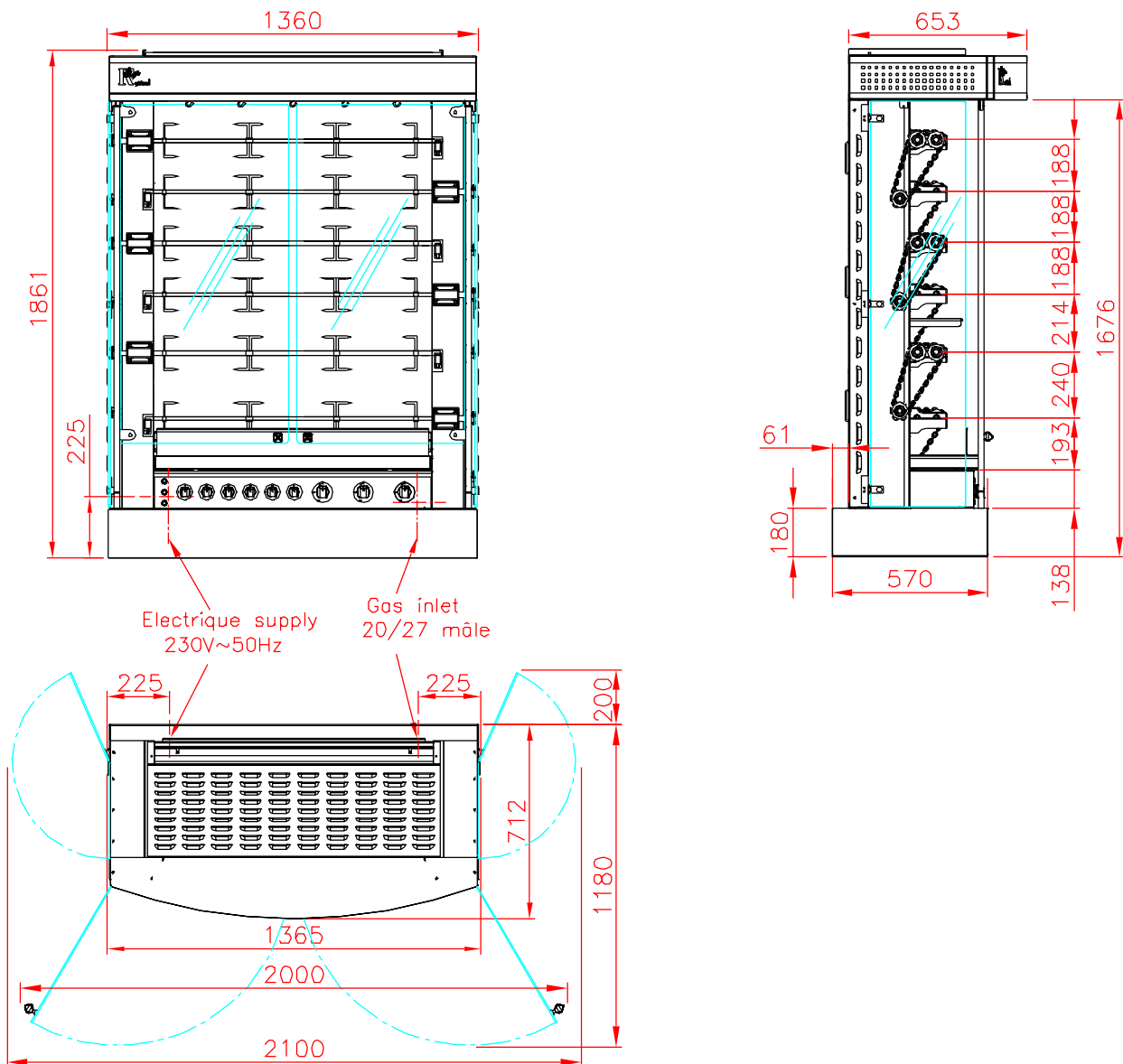


Technical data

GRANDES FLAMMES OLYMPIA REF.: 1350 NGF.6 GAS



CHARACTERISTICS

Capacity: 30/36 poultries, Poids: 415 Kgs

Luxury finishes: black enamel and brass or stainless steel fittings

6 adjustable spits + alternative system of vertical spits with 5 hooks

Electrical supply: 230 Volt 1 phase + neutral + earth (230V~50Hz)

Length of the cable: 2 meters

Electric power 0,77 kW composed of:

_7 motors of 30 W,

_8 ventilators of 20 W, 2 halogen lamps of 200 W

Power gas: 45 kW

Consumption natural gas.: 4,77 m³/h

Consumption gas propane: 3,48 Kg/h

OPTIONS: Email specific color ref.: COLOR, alternative engine ref.: AM20, stand on wheels

ACCESSORIES: Spits, prongs, spit mover, gas lighter, rack and trays.